

# Email Function

First, the Email sender must support smtp

## 1、Email Setting 1

Please set as follow, I use Email server: [www.126.com](http://www.126.com) as an example

Configuration

Control Panel

- Query System Info
  - VERSION
  - HDD INFO
  - LOG
- System Config
  - GENERAL
  - ENCODE
  - SCHEDULE
  - RS232
  - NETWORK
    - EMAIL
    - DDNS
    - NAS
    - NTP
    - ALARM CENTER
  - ALARM
  - DETECT
  - PAN/TILT/Zoom
- Account
  - Record
  - ACCOUNT
  - AUTO MAINTENANCE
- ADDITIONAL FUNCTION
  - DNS

EMAIL

SMTP Server: 220.181.15.112  Enable

Port: 25 0~65535

User Name: wubing1978\_1

Password: \*\*\*\*\*

Sender: wubing1978\_1@126.com

Subject: DVR Email Test

Receiver 1: wu\_bing@dahuatech.com

Receiver 2: wubing1978\_1@yahoo.com

Receiver 3:

Save Refresh

Must Enable

Server port (usually 25)

user name and password

Receiver

Sender: must your Email address

You can set any subject according your needs

Email server ipaddress, you can ping the server to get the ip

```
C:\WINDOWS\system32\cmd.exe
Microsoft Windows XP [版本 5.1.2600]
(C) 版权所有 1985-2001 Microsoft Corp.

C:\Documents and Settings\wubing>ping smtp.126.com

Pinging smtp.126.split.netease.com [220.181.15.112] with 32 bytes of data:

Reply from 220.181.15.112: bytes=32 time=53ms TTL=52
Reply from 220.181.15.112: bytes=32 time=42ms TTL=52
Reply from 220.181.15.112: bytes=32 time=42ms TTL=52
Reply from 220.181.15.112: bytes=32 time=42ms TTL=52

Ping statistics for 220.181.15.112:
    Packets: Sent = 4, Received = 4, Lost = 0 (0% loss),
    Approximate round trip times in milli-seconds:
        Minimum = 42ms, Maximum = 53ms, Average = 44ms

C:\Documents and Settings\wubing>
```

微软拼音 半:

- A、 Ping the Email server to get the ipaddress, e.g.: ping smtp.126.com to get ip:220.181.15.112
- B、 Input user name and password of your account  
e.g.: Username:wubing1978\_1  
Password:780813
- C、 Input sender: must the whole Email address of the sender,  
e.g:wubing1978\_1@126.com
- D、 Set Subject as your Email title: you can set any title according your need
- E、 Input receiver email address

## 2、 Email Setting 2

- A、 You can input domin name of the Email server, such as:smtp.126.com, if you set DNS settings

The screenshot shows a 'Configuration' window with a tree view on the left and an 'EMAIL' configuration panel on the right. The tree view includes 'CONTROL PANEL', 'SYSTEM CONFIG', 'NETWORK', 'ADVANCED', and 'ADDITIONAL FUNCTION', with 'DNS' highlighted under 'ADDITIONAL FUNCTION'. The 'EMAIL' panel contains the following fields:

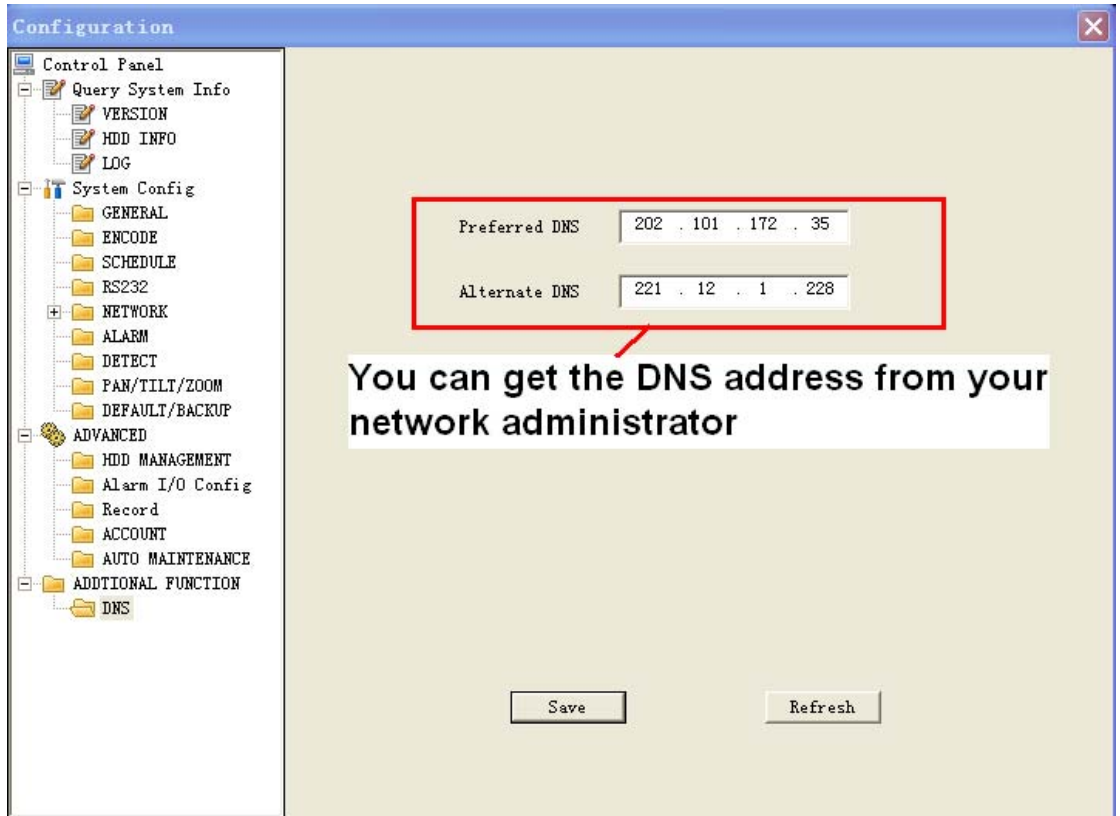
- SMTP Server: smtp.126.com (highlighted with a pink box)
- Port: 25 (highlighted with a pink box)
- User Name: wubing1978\_1 (highlighted with a pink box)
- Password: \*\*\*\*\* (highlighted with a pink box)
- Sender: wubing1978\_1@126.com (highlighted with a green box)
- Subject: DVR Email Test (highlighted with a blue box)
- Receiver 1: wu\_bing@dahuatech.com (highlighted with a blue box)
- Receiver 2: wubing1978\_1@yahoo.com (highlighted with a blue box)
- Receiver 3: (empty)

Annotations in red text with arrows point to various fields:

- 'Must Enable' points to the 'enable' checkbox.
- 'Server port (usually 25)' points to the 'Port' field.
- 'user name and password' points to the 'User Name' and 'Password' fields.
- 'Receiver' points to the 'Receiver 1' and 'Receiver 2' fields.
- 'Sender: must your Email address' points to the 'Sender' field.
- 'You can set any subject according your needs' points to the 'Subject' field.
- 'Email server: If it is domin name, please set DNS' points to the 'SMTP Server' field and the 'DNS' folder in the tree view.

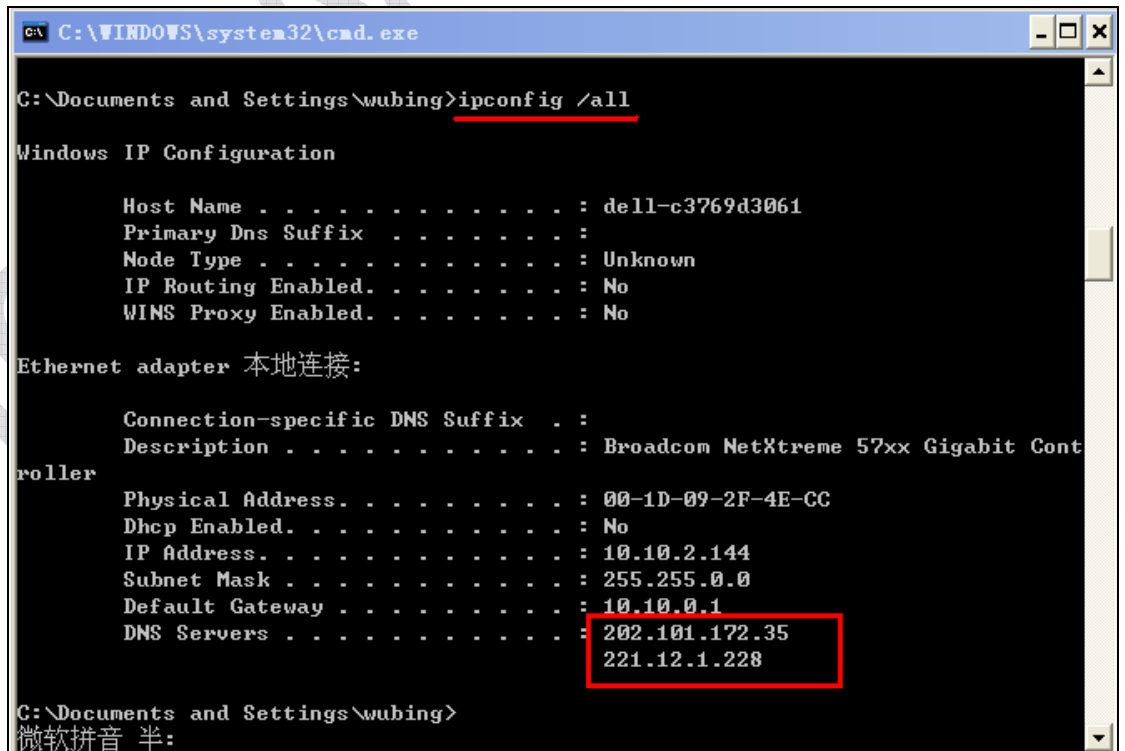
Buttons for 'Save' and 'Refresh' are visible at the bottom right.

## B. DNS Setting



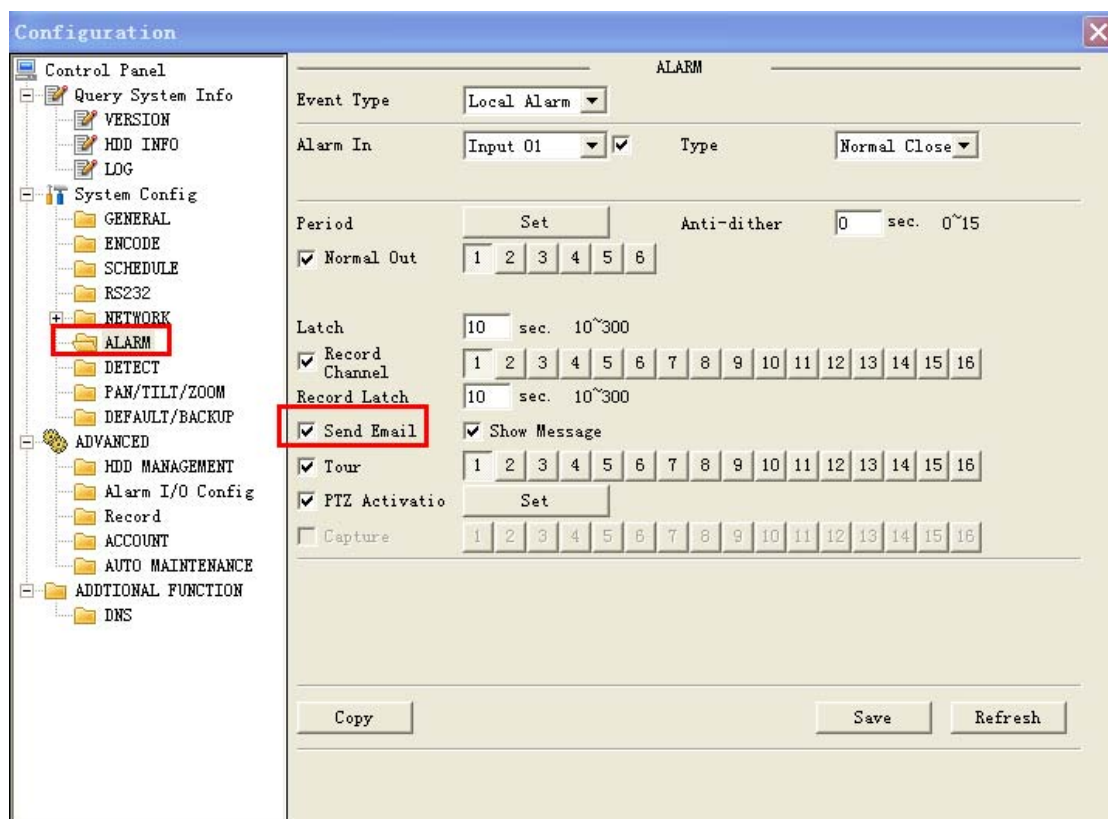
C. Or get DNS setting from your PC in the same network by command:

[ipconfig /all](#)



### 3、 Send Email

- A、 Enable Send Email function of Detect or Alarm settings, when there are alarms, it will send Email



- B、 The Email will like this

#### DVR Email Test

wubing1978\_1

收件人: wubing1978\_1@126.com; wu\_bing@dahuatech.com

Alarm event: Local Alarm  
Alarm input channel No.: 1  
Alarm start time(D/M/Y H:M:S): 7/1/2009 13:18:3  
Alarm device name: localhost  
Sender IP address: 10.10.5.81

### 4、 Some test account

- 1、 Dahua Email server  
smtp server : 60.191.94.126  
or you can ping : www.dahuatech.com to get the ip address  
port: 25  
Sender: aftest@dahuatech.com  
password:123456

---

2、126

ping smtp.126.com to get ipaddress: 220.181.15.113(may be they will change it, please ping the website to get the ip)

port: 25

Sender: wubing1978\_1@126.com

password:780813

3、Sina

ping smtp.sina.com to get ipaddress: 202.108.3.190(may be they will change it, please ping the website to get the ip)

port: 25

Sender: wubing\_1@sina.com

Password:13910175532

Ice Wubing